

Kentlands

Gaithersburg, Maryland

Client: The Kentlands Company (Joseph Alfandre)/ Great Seneca Development Corp.

Project Profile

Description: 2,834 units (544 single family homes, 353 town homes, 1287 multifamily homes, 650 apartments); 2.0 million sq. ft. office/retail

Site Area: 356 acres

Status: Completed

Design Services: Urban

Design/Landscape

Architecture, Development

Entitlements, Site

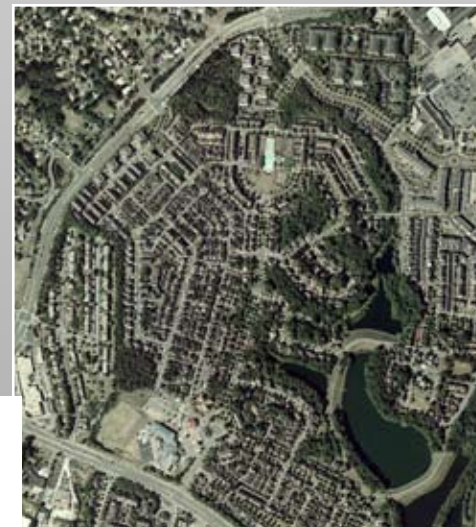
Engineering, Natural

Resource Management,

Surveying

Kentlands was one of the first year-round communities that was designed as a Neo-traditional or New Urbanist community in the United States. Rodgers Consulting was involved in this award winning community from the beginning, working on site planning, engineering and environmental issues, and participating on the charrette

team that included Andres Duany and Elizabeth Plater-Zyberk. Rodgers Consulting was also involved with the majority of coordination and plan approval with the City of Gaithersburg, in order to implement the vision of the charrette team. Some of the ground-breaking features of this community include: typology codes, intermixed land uses, modified street designs, roundabouts, modified parking standards, the inclusion of local services in neighborhood design and the use of the 5 minute walk to establish the reasonable limits to neighborhoods.



3/10

RODGERS
CONSULTING

Knowledge • Creativity • Enduring Values